

# TRM 781

## Experience™ Series

# Treadmill

### Product Highlights

The TRM 781 combines essential reliability and ease-of-use with touchscreen technology at a value just right for you. This treadmill is designed to optimize performance and maintenance for you while providing a comfortable and effective workout for your exercisers. The simple, clean design holds up under heavy commercial use, ensuring your investment will last into the future.

### Product Features

#### 1. P82 Touchscreen Console Connects to Apple Watch\*

The P82 console offers a brilliant 15 inch screen that's ergonomically positioned to deliver crystal clear entertainment viewing for exercisers in motion. When networked, it is also a direct-to-exerciser communication portal allowing you an opportunity to build your brand, share information about activities and services, and strengthen the sense of community within your facility. Available with the optional Precor Smart Watch Connector for Apple Watch®.

#### 2. Motor Drive System

The 4 HP high-efficiency AC-motor drive (8 HP peak) improves performance, efficiency, and reliability through improved internal cooling, a wider operating range, and unique input current averaging to identify more precisely when a running belt requires replacement.

#### 3. Integrated Footplant Technology™

Recognizes exercisers' natural foot speed and matches every stride for an ultra-smooth feel that enhances their workout experience.

#### 4. Ground Effects® Impact Control System

Our patented system combines ideal cushioning, support, and stability for exercisers. Precor decks are designed to provide more absorption in the front where exercisers' feet hit the belt and added rigidity at the back for a firm push-off.

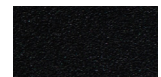
#### 5. Active Status Light

To increase uptime, an external status light lets you and your staff know at a glance the operating condition of your treadmill and when to perform life-extending maintenance.



Storm Grey

Refined colorways with dark Tungsten covers and two frame color options, Storm Grey and Black Pearl.



Black Pearl

### Specifications

**Dimensions (L x W x H):** 83 x 35 x 68.5 in / 211 x 89 x 174 cm

**Equipment Weight:** 412 lb / 187 kg

**Step-Up Height:** 9.5 in / 24 cm

**Handrail Length:** 18 in / 46 cm

**Running Surface:** 60 x 22 in / 153 x 56 cm

**Power:** 120 volt, 20 amp individual branch circuit

**Total Workouts:** 27

**Elevation Range:** 0% to 15% incline in 0.5% increments

**Speed Range:** 0.5 - 12 mph / 0.8 - 19.2 km/h



Apple Watch is a trademark of Apple Inc., registered in the U.S. and other countries and regions.

**Motor Drive:** 4 HP high-efficiency AC-motor (8 HP peak)

**Language:** English, Danish, Dutch, French, Finnish, German, Italian, Japanese, Korean, Norwegian, Polish, Portuguese, Russian, Simplified Chinese, Spanish, Swedish, Traditional Chinese, Turkish

**Console Features:** 15 in / 38.1 cm LCD Capacitive Touch Screen with mobile device charger, audio jack and optional Smart Watch Connector for Apple Watch®

**Network Capabilities:** Preva® network capable

**Accessories:** Integrated Reading Rack  
Optional - Cable Management

**Warranty:** Visit [www.precor.com](http://www.precor.com) for warranty terms.

# TRM 761

## Experience™ Series

# Treadmill

### Product Highlights

The TRM 761 combines essential reliability and ease-of-use with touchscreen technology at a value just right for you. This treadmill is designed to optimize performance and maintenance while providing a comfortable and effective workout for your exercisers. The simple, clean design holds up under heavy commercial use, ensuring your investment will last into the future.

### Product Features

#### 1. P62 Console

The P62 console features personalized viewing and the remarkable clarity of TV and internet options that exercisers crave, all in a 10 in / 25.4 cm screen. With the ability to “favorite” selections for the future, exercisers can customize their workout experience based on what’s important to them.

#### 2. Motor Drive System

The 4 HP high-efficiency AC-motor drive (8 HP peak) improves performance, efficiency, and reliability through improved internal cooling, a wider operating range, and unique input current averaging to identify more precisely when a running belt requires replacement.

#### 3. Integrated Footplant Technology™

Recognizes exercisers’ natural foot speed and matches every stride for an ultra-smooth feel that enhances their workout experience.

#### 4. Ground Effects® Impact Control System

Our patented system combines ideal cushioning, support, and stability for exercisers. Precor decks are designed to provide more absorption in the front where exercisers’ feet hit the belt and added rigidity at the back for a firm push-off.

#### 5. Active Status Light

To increase uptime, an external status light lets you and your staff know at a glance the operating condition of your treadmill and when to perform life-extending maintenance.



Storm Grey

Refined colorways with dark Tungsten covers and two frame color options, Storm Grey and Black Pearl.



Black Pearl

### Specifications

**Dimensions (L x W x H):** 83 x 35 x 68.5 in / 211 x 89 x 174 cm

**Equipment Weight:** 405 lb / 185 kg

**Step-Up Height:** 9.5 in / 24 cm

**Handrail Length:** 18 in / 46 cm

**Running Surface:** 60 x 22 in / 153 x 56 cm

**Power:** 120 volt, 20 amp individual branch circuit

**Total Workouts:** 27

**Elevation Range:** 0% to 15% incline in 0.5% increments

**Speed Range:** 0.5 - 12 mph / 0.8 - 19.2 km/h

**Motor Drive:** 4 HP high-efficiency AC-motor (8 HP peak)

**Language:** English, Danish, Dutch, French, Finnish, German, Italian, Japanese, Korean, Norwegian, Polish, Portuguese, Russian, Simplified Chinese, Spanish, Swedish, Traditional Chinese, Turkish

**Network Capabilities:** Preva® network capable

**Entertainment:** 10 in / 25.4 cm LCD Capacitive Touch Screen  
Mobile Device Charger and Audio Jack

**Accessories:** Integrated Reading Rack  
Optional - Cable Management

**Warranty:** Visit [www.precor.com](http://www.precor.com) for warranty terms.

# TRM 731

## Experience™ Series

# Treadmill

### Product Highlights

The TRM 731 combines essential reliability and ease-of-use with an intuitive console at a value just right for you. This treadmill is designed to optimize performance and maintenance while providing a comfortable and effective workout for your exercisers. The simple, clean design holds up under heavy commercial use, ensuring your investment will last into the future.

### Product Features

#### 1. P31 Console

Finally, an LED console that works harder for you, your servicers, and your exercisers. Get integrated asset management to supercharge your service techs with extra information, right at their fingertips. Exercisers will enjoy the well-placed channel or volume change controls. The black color on the P31 looks great across the full range of Precor cardio equipment.

#### 2. Motor Drive System

The motor drive system improves performance, efficiency, and reliability through improved internal cooling, a wider operating range, and unique input current averaging to identify more precisely when a running belt requires replacement.

#### 3. Integrated Footplant Technology™

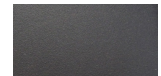
Recognizes exercisers' natural foot speed and matches every stride for an ultra-smooth feel that enhances their workout experience.

#### 4. Ground Effects® Impact Control System

Our patented system combines ideal cushioning, support, and stability for exercisers. Precor decks are designed to provide more absorption in the front where exercisers' feet hit the belt and added rigidity at the back for a firm push-off.

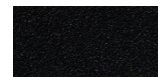
#### 5. Active Status Light

To increase uptime, an external status light lets you and your staff know at a glance the operating condition of your treadmill and when to perform life-extending maintenance.



Storm Grey

Refined colorways with dark Tungsten covers and two frame color options, Storm Grey and Black Pearl.



Black Pearl

### Specifications

**Dimensions (L x W x H):** 83 x 35 x 62 in / 211 x 89 x 157.5 cm

**Equipment Weight:** 405 lb / 184 kg

**Step-Up Height:** 9.5 in / 24 cm

**Handrail Length:** 18 in / 46 cm

**Running Surface:** 60 x 22 in / 153 x 56 cm

**Speed Range:** 0.5 - 12 mph / 0.8 - 19.2 km/h

**Elevation Range:** 0% to 15% incline in 0.5% increments

**Power:** 120 volt, 20 amp individual branch circuit

**Total Workouts:** 27

**Language:** English, French, German, Italian, Japanese, Portuguese, Russian, Spanish

**Network Capabilities:** C-SAFE enabled  
Mobile Device Charger - Standard

**Entertainment:** Optional - 15 in / 38.1 cm Personal Viewing System (PVS)  
Optional - TV Audio Receiver

**Accessories:** Integrated Reading Rack  
Optional - Cable Management

**Warranty:** Visit [www.precor.com](http://www.precor.com) for warranty terms.