

TRM 885

Experience™ Series

Treadmill

Product Highlights

The TRM 885 adds value to your facility by combining essential reliability and ease-of-use with a feeling that's personalized to every step. Thoughtful design and performance deliver an exerciser experience that feels natural. The TRM 885 makes it easier for you to provide a customer-focused environment. Quiet and efficient, we've streamlined the assembly and included diagnostic tools to increase uptime and keep operating costs down.

Product Features

1. P82 Touchscreen Console Connects to Apple Watch®

The P82 console offers a brilliant 15 inch screen that's ergonomically positioned to deliver crystal clear entertainment viewing for exercisers in motion. When networked, it is also a direct-to-exerciser communication portal allowing you an opportunity to build your brand, share information about activities and services, and strengthen the sense of community within your facility. Available with the optional Precor Smart Watch Connector for Apple Watch®.

2. Power Factor Correction (PFC)

The 4 HP high-efficiency AC-motor drive (8 HP peak) is optimized with PFC for increased efficiency, improved performance, and reduced energy consumption by up to 30%.

3. Integrated Footplant Technology™

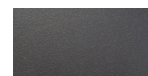
Integrated Footplant Technology recognizes the exerciser's natural foot speed and matches every stride for an ultra-smooth feel that enhances the workout experience.

4. Ground Effects® Impact Control System

This patented system combines ideal cushioning, support, and stability for exercisers. Precor treadmill decks are designed to absorb more impact in the front where exercisers' feet hit the belt. Added rigidity at the back of the belt allows for a firm push-off.

5. Active Status Light

To increase uptime, an external status light lets you and your staff know at a glance the operating condition of your treadmill and when to perform life-extending maintenance.



Storm Grey

Refined colorways with dark Tungsten covers and two frame color options, Storm Grey and Black Pearl.



Black Pearl

Specifications

Dimensions (L x W x H): 83 x 35 x 68.5 in / 211 x 89 x 174 cm

Equipment Weight: 430 lb / 195 kg

Power: 120 volt, 20 amp individual branch circuit

Total Workouts: 27

Motor Drive: 4 HP high-efficiency AC-motor (8 HP peak)

Speed Range: 0.5 - 16 mph / 0.8 - 25.5 km/h

Elevation Range: -3% to 15% incline in 0.5% increments



Apple Watch is a trademark of Apple Inc., registered in the U.S. and other countries and regions.

Language: English, Danish, Dutch, French, Finnish, German, Italian, Japanese, Korean, Norwegian, Polish, Portuguese, Russian, Simplified Chinese, Spanish, Swedish, Traditional Chinese, Turkish

Console Features: 15 in / 38.1 cm LCD Capacitive Touch Screen with mobile device charger, audio jack and optional Smart Watch Connector for Apple Watch®

Network Capabilities: Preva® network capable

Accessories: Integrated Reading Rack, Accessories Holder
Optional - Cable Management

Warranty: Visit www.precor.com for warranty terms.

TRM 865

Experience™ Series

Treadmill

Product Highlights

The TRM 865 treadmill adds value to your facility by combining essential reliability and ease-of-use with a feeling that's personalized to every step. Thoughtful design and performance deliver an exerciser experience that feels right. The TRM 865 makes it easier for you to provide a customer-focused environment. Quiet and efficient, we've streamlined the assembly and included diagnostic tools to increase uptime and keep operating costs down.

Product Features

1. P62 Console

The P62 console features personalized viewing and the remarkable clarity of TV and internet options that exercisers crave, all in a 10 in / 25.4 cm screen. With the ability to "favorite" selections for the future, exercisers can customize their workout experience based on what's important to them.

2. Power Factor Correction (PFC)

Our highly efficient 4 HP AC motor drives are optimized with Power Factor Correction (PFC) for increased efficiency, improved performance, and up to 30% reduction in energy consumption.

3. Integrated Footplant Technology™

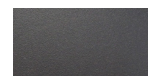
Recognizes exercisers' natural foot speed and matches every stride for an ultra-smooth feel that enhances their workout experience.

4. Ground Effects® Impact Control System

Our patented system combines ideal cushioning, support, and stability for exercisers. Precor decks are designed to provide more absorption in the front where exercisers' feet hit the belt and added rigidity at the back for a firm push-off.

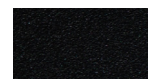
5. Active Status Light

To increase uptime, an external status light lets you and your staff know at a glance the operating condition of your treadmill and when to perform life-extending maintenance.



Storm Grey

Refined colorways with dark Tungsten covers and two frame color options, Storm Grey and Black Pearl.



Black Pearl

Specifications

Dimensions (L x W x H): 83 x 35 x 68.5 in / 211 x 89 x 174 cm

Equipment Weight: 430 lb / 195 kg

Step-up Height: 9.5 in / 24 cm

Power: 120 volt, 20 amp individual branch circuit

Motor Drive: 4 HP AC motor with Power Factor Correction

Speed Range: 0.5 - 16 mph / 0.8 - 25.5 km/h

Elevation Range: -3% to 15% incline in 0.5% increments

Total Workouts: 27

Language: English, Danish, Dutch, French, Finnish, German, Italian, Japanese, Korean, Norwegian, Polish, Portuguese, Russian, Simplified Chinese, Spanish, Swedish, Traditional Chinese, Turkish

Network Capabilities: Preva® network capable

Entertainment: 10 in / 25.4 cm LCD Capacitive Touch Screen
Mobile Device Charger and Audio Jack

Accessories: Integrated Reading Rack
Optional - Cable Management

Warranty: Visit www.precor.com for warranty terms.

TRM 835

Experience™ Series

Treadmill

Product Highlights

The TRM 835 combines thoughtful design and performance to deliver an exerciser experience that feels right. The TRM 835 makes it easier for you to provide a customer-focused environment. Quiet and efficient, the streamlined assembly includes diagnostic tools to increase uptime and keep operating costs down.

Product Features

1. P31 Console

Finally, an LED console that works harder for you, your servicers, and your exercisers. Get integrated asset management to supercharge your service techs with extra information, right at their fingertips. Exercisers will enjoy the well-placed channel or volume change controls. The black color on the P31 looks great across the full range of Precor cardio equipment.

2. Power Factor Correction (PFC)

The highly efficient 4 HP AC motor drives are optimized with PFC for increased efficiency, improved performance, and reduced energy consumption by up to 30%.

3. Integrated Footplant Technology™

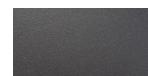
Integrated Footplant Technology recognizes the exerciser's natural foot speed and matches every stride for an ultra-smooth feel that enhances the workout experience.

4. Ground Effects® Impact Control System

This patented system combines ideal cushioning, support, and stability for exercisers. Precor treadmill decks are designed to absorb more impact in the front where exercisers' feet hit the belt. Added rigidity at the back of the belt allows for a firm push-off.

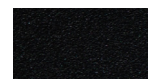
5. Active Status Light

To increase uptime, an external status light lets you and your staff know at a glance the operating condition of your treadmill and when to perform life-extending maintenance.



Storm Grey

Refined colorways with dark Tungsten covers and two frame color options, Storm Grey and Black Pearl.



Black Pearl

Specifications

Dimensions (L x W x H): 83 x 35 x 62 in / 211 x 89 x 157.5 cm

Equipment Weight: 420 lb / 190 kg

Power: 120 volt, 20 amp individual branch circuit

Total Workouts: 27

Motor Drive: 4 HP AC motor with Power Factor Correction

Speed Range: 0.5 - 16 mph / 0.8 - 25.5 km/h

Elevation Range: -3% to 15% incline in 0.5% increments

Language: English, Dutch, French, German, Italian, Japanese, Portuguese, Russian, Spanish

Network Capabilities: C-SAFE enabled
Mobile Device Charger - Standard

Entertainment: Optional - 15 in / 38.1 cm Personal Viewing System (PVS)
Optional - TV Audio Receiver

Accessories: Integrated Reading Rack
Optional - Cable Management

Warranty: Visit www.precor.com for warranty terms.

AMT® 885

Experience™ Series

ADAPTIVE MOTION TRAINER®

Product Highlights

Like every piece of equipment in our Experience™ Series 880 Line, the AMT® 885 combines essential reliability and ease-of-use with smooth, flowing, and precise motion to add value to your facility. The AMT with Open Stride™ is the only variable stride cardio equipment with adjustable step height, allowing exercisers to train in a variety of stride paths, including running, jogging, and stepping. With one piece of equipment that creates an array of movement patterns, you can maximize valuable floor space and help exercisers stay engaged in their workouts.

Product Features

1. P82 Touchscreen Console Connects to Apple Watch®

The P82 console offers a brilliant 15 inch screen that's ergonomically positioned to deliver crystal clear entertainment viewing for exercisers in motion. When networked, it is also a direct-to-exerciser communication portal allowing you an opportunity to build your brand, share information about activities and services, and strengthen the sense of community within your facility. Available with the optional Precor Smart Watch Connector for Apple Watch®.

2. Open Stride™

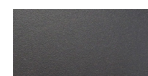
Open Stride™ is a unique feature that allows exercisers not only to dynamically adapt their stride length from zero to 36 inches (0 to 91 cm), but also to adjust their stride height from 6.8 to 10 in (17 to 25 cm), providing an infinite range of stride paths to engage several muscle groups. Open Stride™ can be adjusted from level 1 to 5 with the tactile motion controls.

3. Handlebars Fit Everyone

The tapered moving handlebars provide a comfortable fit for nearly every exerciser. The stationary grip has a heart rate sensor* built-in that provides monitoring and a stable, comfortable position when focusing on the lower body.

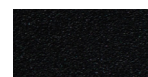
4. Total Body Workout in One Piece of Equipment

Exercisers can go from short stride to long stride, walking to running, and climbing to striding, allowing them to target different muscle groups. Pushing and pulling the moving handlebars will engage the upper body, resulting in a total body workout.



Storm Grey

Refined colorways with dark Tungsten covers and two frame color options, Storm Grey and Black Pearl.



Black Pearl

Specifications

Dimensions (L x W x H): 80 x 35 x 73 in / 203 x 89 x 186 cm

Equipment Weight: 422 lb / 191 kg

Power: 120 volt, 15 amp circuit

Total Workouts: 12

Resistance Levels: 20

Adjustable Stride Length: 0 - 36 in / 0 - 91 cm

Stride Height: 6.8 - 10 in / 17 - 25 cm (Five levels)

Language: English, Danish, Dutch, French, Finnish, German, Italian, Japanese, Korean, Norwegian, Polish, Portuguese, Russian, Simplified Chinese, Spanish, Swedish, Traditional Chinese, Turkish



Apple Watch is a trademark of Apple Inc., registered in the U.S. and other countries and regions.

Console Features: 15 in / 38.1 cm LCD Capacitive Touch Screen with mobile device charger, audio jack and optional Smart Watch Connector for Apple Watch®

Network Capabilities: Preva® network capable

Accessories: Integrated Reading Rack
Optional - Cable Management

Warranty: Visit www.precor.com for warranty terms.

* The heart rate feature is intended for reference only. They may not be accurate for every user or at every intensity and are not intended for use as a medical device.

GO.PRECOR.COM/AMT885

© 2021 Precor Incorporated

PRECOR®

AMT® 865

Experience™ Series

ADAPTIVE MOTION TRAINER®

Product Highlights

The Experience™ Series AMT® 865 combines essential reliability and ease-of-use with smooth, flowing, and precise motion to add value to your facility. The AMT with Open Stride™ is the only variable stride cardio equipment with adjustable step height, allowing exercisers to train in a variety of stride paths, including running, jogging, and stepping. With one piece of equipment that creates an array of movement patterns, you can maximize valuable floor space and help exercisers stay engaged in their workouts.

Product Features

1. P62 Console

The P62 console features personalized viewing and the remarkable clarity of TV and internet options that exercisers crave, all in a 10 in / 25.4 cm screen. With the ability to “favorite” selections for the future, exercisers can customize their workout experience based on what’s important to them.

2. Open Stride™

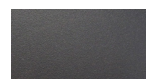
Open Stride™ is a unique feature that allows exercisers not only to dynamically adapt their stride length from zero to 36 inches (0 to 91 cm), but also to adjust their stride height from 6.8 to 10 in (17 to 25 cm), providing an infinite range of stride paths to engage several muscle groups. Open Stride™ can be adjusted from level 1 to 5 with the tactile motion controls.

3. Handlebars Fit Everyone

The tapered moving handlebars provide a comfortable fit for nearly every exerciser. The stationary grip has a heart rate sensor built-in that provides monitoring and a stable, comfortable position when focusing on the lower body.

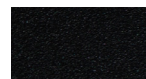
4. Total Body Workout in One Piece of Equipment

Exercisers can go from short stride to long stride, walking to running, and climbing to striding, allowing them to target different muscle groups. Pushing and pulling the moving handlebars will engage the upper body, resulting in a total body workout.



Storm Grey

Refined colorways with dark Tungsten covers and two frame color options, Storm Grey and Black Pearl.



Black Pearl

Specifications

Dimensions (L x W x H): 80 x 35 x 73 in / 203 x 89 x 186 cm

Equipment Weight: 422 lb / 191 kg

Power: 120 volt, 15 amp circuit

Total Workouts: 12

Resistance Levels: 20

Adjustable Stride Length: 0 - 36 in / 0 - 91 cm

Stride Height: 6.8 - 10 in / 17 - 25 cm (Five levels)

Language: English, Danish, Dutch, French, Finnish, German, Italian, Japanese, Korean, Norwegian, Polish, Portuguese, Russian, Simplified Chinese, Spanish, Swedish, Traditional Chinese, Turkish

Network Capabilities: Preva® network capable

Entertainment: 10 in / 25.4 cm LCD Capacitive Touch Screen
Mobile Device Charger and Audio Jack

Accessories: Integrated Reading Rack
Optional - Cable Management

Warranty: Visit www.precor.com for warranty terms.

*The heart rate feature is intended for reference only. They may not be accurate for every user or at every intensity and are not intended for use as a medical device.

GO.PRECOR.COM/AMT865

© 2021 Precor Incorporated.



AMT® 835

Experience™ Series

ADAPTIVE MOTION TRAINER®

Product Highlights

Like every piece of equipment in our Experience Series™ 830 Line, the AMT® 835 with Open Stride™ combines essential reliability and ease-of-use with a natural, low-impact stride to add value to your facility. The AMT 835 enables exercisers of all levels to personalize their workouts, keeping them engaged and challenged.

Product Features

1. P31 Console

Finally, an LED console that works harder for you, your servicers, and your exercisers. Get integrated asset management to supercharge your service techs with extra information, right at their fingertips. Exercisers will enjoy the well-placed channel or volume change controls. The black color on the P31 looks great across the full range of Precor cardio equipment.

2. Open Stride™

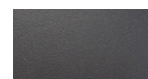
Open Stride™ is a unique feature that allows exercisers not only to dynamically adapt their stride length from zero to 36 inches (0 to 91 cm), but also to adjust their stride height from 6.8 to 10 inches (17 to 25 cm), providing an infinite range of stride paths to engage several muscle groups. Open Stride™ can be adjusted from level 1 to 5 with the tactile motion controls.

3. Handlebars Fit Everyone

The tapered moving handlebars provide a comfortable fit for nearly every exerciser. The stationary grip has a heart rate sensor built-in that provides monitoring and a stable, comfortable position when focusing on the lower body.

4. Total Body Workout in One Piece of Equipment

Exercisers can go from short stride to long stride, walking to running, climbing to striding, allowing them to target different muscle groups. Pushing and pulling the moving handlebars will engage the upper body, resulting in a total body workout.



Storm Grey

Refined colorways with dark Tungsten covers and two frame color options, Storm Grey and Black Pearl.



Black Pearl

Specifications

Dimensions (L x W x H): 80 x 35 x 69 in / 203 x 89 x 175 cm

Equipment Height with PVS: 82 in / 208 cm

Equipment Weight: 412 lb / 187 kg

Power: Self-powered

Total Workouts: 6

Resistance Levels: 20

Adjustable Stride Length: 0 - 36 in / 0 - 91 cm

Stride Height: 6.8 - 10 in / 17 - 25 cm

Language: English, French, German, Italian, Japanese, Portuguese, Russian, Spanish

Network Capabilities: C-SAFE enabled

Entertainment: Standard - Mobile Device Charger and Audio Jack
Optional - 15 in / 38.1 cm Personal Viewing System (PVS)
Optional - TV Audio Receiver

Accessories: Integrated Reading Rack
Optional - Cable Management

Warranty: Visit www.precor.com for warranty terms.

*The heart rate feature is intended for reference only. They may not be accurate for every user or at every intensity and are not intended for use as a medical device.

GO.PRECOR.COM/AMT835

© 2021 Precor Incorporated.



EFX[®] 885

Experience[™] Series

ELLIPTICAL

Product Highlights

The EFX[®] 885 with Converging CrossRamp[®] combines essential reliability and ease-of-use with a natural, low-impact stride to add value to your facility. Design enhancements ensure easy cleaning and maintenance for you, while the unique adjustable Converging CrossRamp[®] technology and upper body moving handlebars deliver a total body workout for your exercisers.

Product Features

1. Handlebars

With moving handlebars, exercisers can push and pull with their upper body to achieve a total body workout.

2. P82 Touchscreen Console Connects to Apple Watch[®]

The P82 console offers a brilliant 15 inch screen that's ergonomically positioned to deliver crystal clear entertainment viewing for exercisers in motion. When networked, it is also a direct-to-exerciser communication portal allowing you an opportunity to build your brand, share information about activities and services, and strengthen the sense of community within your facility. Available with the optional Precor Smart Watch Connector for Apple Watch[®].

3. Converging CrossRamp[®]

Patented converging footpath design and incline adjustments between 10 - 35 degrees, along with 20 levels of resistance, give exercisers a challenging workout with a more natural feeling stride.

4. Covered Rear Drive Housing

Maintenance is easy with a covered ramp and rear drive housing that enable quick access for cleaning.

5. Active Status Light

Alerts staff at a glance when the EFX needs maintenance or service.

Specifications

Dimensions (L x W x H): 80 x 28 x 72 in / 203 x 71 x 183 cm

Equipment Weight: 340 lb / 154 kg

Step-up Height: 8 in / 20 cm (pedal at lowest point)

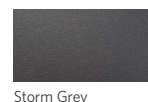
Power: 120 volt, 15 amp circuit

Total Workouts: 22

Resistance Levels: 20

Ramp Angle: 10-35 degrees

Language: English, Danish, Dutch, French, Finnish, German, Italian, Japanese, Korean, Norwegian, Polish, Portuguese, Russian, Simplified Chinese, Spanish, Swedish, Traditional Chinese, Turkish



Storm Grey

Refined colorways with dark Tungsten covers and two frame color options, Storm Grey and Black Pearl.



Black Pearl



Apple Watch is a trademark of Apple Inc., registered in the U.S. and other countries and regions.

Console Features: 15 in / 38.1 cm LCD Capacitive Touch Screen with mobile device charger, audio jack and optional Smart Watch Connector for Apple Watch[®]

Network Capabilities: Preva[®] network capable

Accessories: Integrated Reading Rack
Optional - Cable Management

Warranty: Visit www.precor.com for warranty terms.

EFX® 865

Experience™ Series

ELLIPTICAL

Product Highlights

The EFX® 865 with Converging CrossRamp® combines essential reliability and ease-of-use with a natural, low-impact stride to add value to your facility. Design enhancements ensure easy cleaning and maintenance for you, while the unique adjustable Converging CrossRamp® technology and upper body moving handlebars deliver a total body workout for your exercisers.

Product Features

1. Handlebars

With moving handlebars, exercisers can push and pull with their upper body to achieve a total body workout.

2. P62 Console

The P62 console features personalized viewing and the remarkable clarity of TV and internet options that exercisers crave, all in a 10 in / 25.4 cm screen. With the ability to “favorite” selections for the future, exercisers can customize their workout experience based on what’s important to them.

3. Converging CrossRamp®

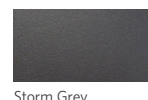
Patented converging footpath design and incline adjustments between 10 - 35 degrees, along with 20 levels of resistance, give exercisers a challenging workout with a more natural feeling stride.

4. Covered Rear Drive Housing

Experience easy maintenance with the covered ramp and rear drive housing that enable quick access for cleaning.

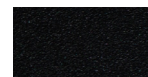
5. Active Status Light

Alerts staff at a glance when the EFX needs maintenance or service.



Storm Grey

Refined colorways with dark Tungsten covers and two frame color options, Storm Grey and Black Pearl.



Black Pearl

Specifications

Dimensions (L x W x H): 80 x 28 x 72 in / 203 x 71 x 183 cm

Equipment Weight: 340 lb / 154 kg

Step-up Height: 8 in / 20 cm (pedal at lowest point)

Power: 120 volt, 15 amp circuit

Total Workouts: 22

Resistance Levels: 20

Ramp Angle: 10-35 degrees

Language: English, Danish, Dutch, French, Finnish, German, Italian, Japanese, Korean, Norwegian, Polish, Portuguese, Russian, Simplified Chinese, Spanish, Swedish, Traditional Chinese, Turkish

Network Capabilities: Preva® network capable

Entertainment: 10 in / 25.4 cm LCD Capacitive Touch Screen
Mobile Device Charger and Audio Jack

Accessories: Integrated Reading Rack
Optional - Cable Management

Warranty: Visit www.precor.com for warranty terms.

EFX® 863

Experience™ Series

ELLIPTICAL

Product Highlights

The EFX® 863 with Converging CrossRamp® combines essential reliability and ease-of-use with a natural, low-impact stride to add value to your facility. Design enhancements ensure easy cleaning and maintenance for you, while the unique adjustable Converging CrossRamp® technology and fixed handlebars deliver a comfortable lower body workout for your exercisers.

Product Features

1. Handlebars

Fixed handlebars allow exercisers to focus on lower body workouts at higher resistance levels or challenge muscle stabilizers during hands-free training.

2. P62 Console

The P62 console features personalized viewing and the remarkable clarity of TV and internet options that exercisers crave, all in a 10 in / 25.4 cm screen. With the ability to “favorite” selections for the future, exercisers can customize their workout experience based on what’s important to them.

3. Converging CrossRamp®

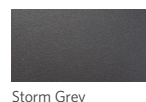
Patented converging footpath design and incline adjustments between 10 - 35 degrees, along with 20 levels of resistance, give exercisers a challenging workout with a more natural feeling stride.

4. Covered Rear Drive Housing

Experience easy maintenance with the covered ramp and rear drive housing that enable quick access for cleaning.

5. Active Status Light

Alerts staff at a glance when the EFX needs maintenance or service.



Storm Grey

Refined colorways with dark Tungsten covers and two frame color options, Storm Grey and Black Pearl.



Black Pearl

Specifications

Dimensions (L x W x H): 80 x 28 x 72 in / 203 x 71 x 183 cm

Equipment Weight: 340 lb / 154 kg

Step-up Height: 8 in / 20 cm (pedal at lowest point)

Power: 120 volt, 15 amp circuit

Total Workouts: 22

Resistance Levels: 20

Ramp Angle: 10-35 degrees

Language: English, Danish, Dutch, French, Finnish, German, Italian, Japanese, Korean, Norwegian, Polish, Portuguese, Russian, Simplified Chinese, Spanish, Swedish, Traditional Chinese, Turkish

Network Capabilities: Preva® network capable

Entertainment: 10 in / 25.4 cm LCD Capacitive Touch Screen
Mobile Device Charger and Audio Jack

Accessories: Integrated Reading Rack
Optional - Cable Management

Warranty: Visit www.precor.com for warranty terms.

EFX® 833

Experience™ Series

ELLIPTICAL

Product Highlights

The EFX® 833 with Converging CrossRamp® combines essential reliability and ease-of-use with a natural, low-impact stride to add value to your facility. Design enhancements ensure easy cleaning and maintenance for you, while the unique adjustable Converging CrossRamp® technology and fixed handlebars deliver a comfortable lower body workout for your exercisers.

Product Features

1. Handlebars

Fixed handlebars allow exercisers to focus on lower body workouts at higher resistance levels or challenge muscle stabilizers during hands-free training.

2. P31 Console

Finally, an LED console that works harder for you, your servicers, and your exercisers. Get integrated asset management to supercharge your service techs with extra information, right at their fingertips. Exercisers will enjoy the well-placed channel or volume change controls. The black color on the P31 looks great across the full range of Precor cardio equipment.

3. Converging CrossRamp®

Patented converging footpath design and incline adjustments between 10 - 35 degrees, along with 20 levels of resistance, give exercisers a challenging workout with a more natural feeling stride.

4. Covered Rear Drive Housing

Experience easy maintenance with the covered ramp and rear drive housing that enable quick access for cleaning.

5. Active Status Light

Alerts staff at a glance when the EFX needs maintenance or service.

Specifications

Dimensions (L x W x H): 80 x 28 x 67 in / 203 x 71 x 170 cm

Equipment Weight: 330 lb / 150 kg

Step-up Height: 8 in / 20 cm (pedal at lowest point)

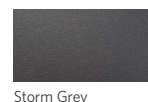
Power: Self-Powered

Total Workouts: 15

Resistance Levels: 20

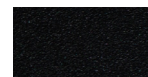
Ramp Angle: 10-35 degrees

Language: English, French, German, Italian, Japanese, Portuguese, Russian, Spanish



Storm Grey

Refined colorways with dark Tungsten covers and two frame color options, Storm Grey and Black Pearl.



Black Pearl

Network Capabilities: C-SAFE enabled
Mobile Device Charger - Standard

Entertainment: Optional - 15 in / 38.1 cm Personal Viewing System (PVS)
Optional - TV Audio Receiver

Accessories: Integrated Reading Rack
Optional - Cable Management

Warranty: Visit www.precor.com for warranty terms.

UBK 885

Experience™ Series

Upright Bike

Product Highlights

The UBK 885 Upright Bike features custom-designed handlebars with integrated touch heart rate for an efficient workout experience with maximum comfort. One-handed seat adjustment on or off the bike, a redesigned saddle for riding comfort, and improved knee over pedal spindle (KOPS) geometry for efficient pedaling all provide a smooth, comfortable workout.

Product Features

1. P82 Touchscreen Console Connects to Apple Watch®

The P82 console offers a brilliant 15 inch screen that's ergonomically positioned to deliver crystal clear entertainment viewing for exercisers in motion. When networked, it is also a direct-to-exerciser communication portal allowing you an opportunity to build your brand, share information about activities and services, and strengthen the sense of community within your facility. Available with the optional Precor Smart Watch Connector for Apple Watch®.

2. Over-molded Handlebars

The over-molded style adds comfort and durability while offering dual heart rate contacts and three ergonomic riding positions: upright, cruising, and road.

3. Seat Adjustment and Improved Saddle Design

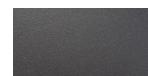
The simple seat adjustment allows the exerciser to change the position of the seat with one hand, either on or off the bike.

4. Dual-sided Pedals

The dual-sided pedals allow the exerciser to use the pedals with or without the integrated straps. The extra-wide pedals comfortably accommodate feet of all sizes to ensure proper pedaling form.

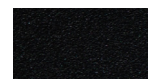
5. Ease of Maintenance

The easy-to-remove shroud ensures quick access to the belt-drive system for maintenance and servicing without removing the pedals or crank.



Storm Grey

Refined colorways with dark Tungsten covers and two frame color options, Storm Grey and Black Pearl.



Black Pearl

Specifications

Dimensions (L x W x H): 48 x 21 x 62 in / 122 x 53 x 157 cm

Equipment Weight: 169 lb / 77 kg

Power: 120 volt, 15 amp circuit

Total Workouts: 17

Resistance Levels: 25

Minimum Watts: 18 (level 1 at 20 RPM)

Maximum Watts: 750 (level 25 at 150 RPM)

Language: English, Danish, Dutch, French, Finnish, German, Italian, Japanese, Korean, Norwegian, Polish, Portuguese, Russian, Simplified Chinese, Spanish, Swedish, Traditional Chinese, Turkish



Apple Watch is a trademark of Apple Inc., registered in the U.S. and other countries and regions.

Console Features: 15 in / 38.1 cm LCD Capacitive Touch Screen with mobile device charger, audio jack and optional Smart Watch Connector for Apple Watch®

Network Capabilities: Preva® network capable

Accessories: Integrated Reading Rack, Dual Bottle Holder
Optional - Cable Management

Warranty: Visit www.precor.com for warranty terms.

UBK 865

Experience™ Series

Upright Bike

Product Highlights

The UBK 865 Upright Bike features custom-designed handlebars with integrated touch heart rate for an efficient workout experience with maximum comfort. One-handed seat adjustment on or off the bike, a redesigned saddle for riding comfort, and improved knee over pedal spindle (KOPS) geometry for efficient pedaling all provide a smooth, comfortable workout.

Product Features

1. P62 Console

The P62 console offers personalized viewing and the remarkable clarity of TV and internet options exercisers crave, all in a 10 in / 25.4 cm screen. With the ability to “favorite” selections for the future, exercisers can customize their workout experience based on what’s important to them.

2. Over-molded Handlebars

Over-molded style adds comfort and durability while offering dual heart rate contacts and three ergonomic riding positions: upright, cruising, and road.

3. Seat Adjustment and Improved Saddle Design

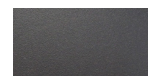
The simple seat adjustment allows the exerciser to change the position of the seat with one hand, either on or off the bike.

4. Dual-sided Pedals

The dual-sided pedals allow the exerciser to use the pedals with or without the integrated straps. The extra-wide pedals comfortably accommodate feet of all sizes to ensure proper pedaling form.

5. Ease of Maintenance

The easy-to-remove shroud ensures quick access to the belt-drive system for maintenance and servicing without removing the pedals or crank.



Storm Grey

Refined colorways with dark Tungsten covers and two frame color options, Storm Grey and Black Pearl.



Black Pearl

Specifications

Dimensions (L x W x H): 48 x 21 x 62 in / 122 x 53 x 157 cm

Equipment Weight: 169 lb / 77 kg

Power: 120 volt, 15 amp circuit

Total Workouts: 17

Resistance Levels: 25

Minimum Watts: 18 (level 1 at 20 RPM)

Maximum Watts: 750 (level 25 at 150 RPM)

Language: English, Danish, Dutch, French, Finnish, German, Italian, Japanese, Korean, Norwegian, Polish, Portuguese, Russian, Simplified Chinese, Spanish, Swedish, Traditional Chinese, Turkish

Network Capabilities: Preva® network capable

Entertainment: 10 in / 25.4 cm LCD Capacitive Touch Screen
Mobile Device Charger and Audio Jack

Accessories: Integrated Reading Rack
Optional - Cable Management

Warranty: Visit www.precor.com for warranty terms.

UBK 835

Experience™ Series

Upright Bike

Product Highlights

The UBK 835 Upright Bike features custom-designed handlebars with integrated touch heart rate for an efficient workout experience with maximum comfort. One-handed seat adjustment on or off the bike, a redesigned saddle for riding comfort, and improved knee over pedal spindle (KOPS) geometry for efficient pedaling all provide a smooth, comfortable workout.

Product Features

1. P31 Console

Finally, an LED console that works harder for you, your servicers, and your exercisers. Get integrated asset management to supercharge your service techs with extra information, right at their fingertips. Exercisers will enjoy the well-placed channel or volume change controls. The black color on the P31 looks great across the full range of Precor cardio equipment.

2. Over-molded Handlebars

The over-molded style adds comfort and durability while offering dual heart rate contacts and three ergonomic riding positions: upright, cruising, and road.

3. Seat Adjustment and Improved Saddle Design

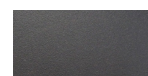
The simple seat adjustment allows the exerciser to change the position of the seat with one hand, either on or off the bike.

4. Dual-sided Pedals

The dual-sided pedals allow the exerciser to use the pedals with or without the integrated straps. The extra wide pedals comfortably accommodate feet of all sizes to encourage proper pedaling form.

5. Ease of Maintenance

The easy-to-remove shroud ensures quick access to the belt-drive system for maintenance and servicing without removing the pedals or crank.



Storm Grey

Refined colorways with dark Tungsten covers and two frame color options, Storm Grey and Black Pearl.



Black Pearl

Specifications

Dimensions (L x W x H): 48 x 21 x 62 in / 122 x 53 x 157 cm

Equipment Weight: 160 lb / 73 kg

Power: Self-Powered

Total Workouts: 12

Resistance Levels: 25

Minimum Watts: 18 (level 1 at 20 RPM)

Maximum Watts: 750 (level 25 at 150 RPM)

Language: English, French, German, Italian, Japanese, Portuguese, Russian, Spanish

Network Capabilities: C-SAFE enabled
Mobile Device Charger - Standard

Entertainment: Optional - 15 in / 38.1 cm Personal Viewing System (PVS)
Optional - TV Audio Receiver

Accessories: Integrated Reading Rack

Warranty: Visit www.precor.com for warranty terms.

RBK 885

Experience™ Series

Recumbent Bike

Product Highlights

The RBK 885 recumbent bike adds value to your facility by combining essential reliability and ease-of-use with smooth pedaling and biomechanically correct geometry. The RBK 885 features a step-through design to appeal to a wide range of exercisers of all ages. The simple seat adjustment allows the exerciser to change the position of the seat with one hand, either on or off the bike. A ventilated air flex seat provides exceptional comfort.

Product Features

1. P82 Touchscreen Console Connects to Apple Watch®

The P82 console offers a brilliant 15 inch screen that's ergonomically positioned to deliver crystal clear entertainment viewing for exercisers in motion. When networked, it is also a direct-to-exerciser communication portal allowing you an opportunity to build your brand, share information about activities and services, and strengthen the sense of community within your facility. Available with the optional Precor Smart Watch Connector for Apple Watch®.

2. Step-through Design

Designed for easy entry, the recumbent bike has a step-through design (14 in / 36 cm wide) with a low step-over height (4 in / 10 cm).

3. Air Flex Seat Back

The custom-designed air flex seat features a ventilated panel and unique suspension system for a cool, cushioned ride.

4. Seat Adjustment

The simple seat adjustment allows the exerciser to change the position of the seat with one hand, either on or off the bike.

5. Ease of Maintenance

The easy-to-remove shroud ensures quick access to the belt-drive system for maintenance and servicing without removing the pedals or crank.

6. Dual-sided Pedals

The dual-sided pedals allow the exerciser to use the pedals with or without the integrated straps. The extra-wide pedals comfortably accommodate feet of all sizes to encourage proper pedaling form.



Storm Grey

Refined colorways with dark Tungsten covers and two frame color options, Storm Grey and Black Pearl.

Black Pearl

Specifications

Dimensions (L x W x H): 67 x 23 x 54 in / 170 x 58 x 136 cm

Equipment Weight: 219 lb / 99 kg

Power: 120 volt, 15 amp circuit

Total Workouts: 17

Resistance Levels: 25

Minimum Watts: 18 (level 1 at 20 RPM)

Maximum Watts: 750 (level 25 at 150 RPM)



Apple Watch is a trademark of Apple Inc., registered in the U.S. and other countries and regions.

Language: English, Danish, Dutch, French, Finnish, German, Italian, Japanese, Korean, Norwegian, Polish, Portuguese, Russian, Simplified Chinese, Spanish, Swedish, Traditional Chinese, Turkish

Console Features: 15 in / 38.1 cm LCD Capacitive Touch Screen with mobile device charger, audio jack and optional Smart Watch Connector for Apple Watch®

Network Capabilities: Preva® network capable

Accessories: Integrated Reading Rack, Accessories Holder
Optional - Cable Management

Warranty: Visit www.precor.com for warranty terms.

RBK 865

Experience™ Series

Recumbent Bike

Product Highlights

The RBK 865 recumbent bike adds value to your facility by combining essential reliability and ease-of-use with smooth pedaling and biomechanically correct geometry.

Product Features

1. P62 Console

The P62 console offers personalized viewing and the remarkable clarity of TV and internet options exercisers crave, all in a 10 in / 25.4 cm screen. With the ability to “favorite” selections for the future, exercisers can customize their workout experience based on what’s important to them.

2. Ultra Comfortable Recumbent Seat Back

Custom-designed air flex seat, featuring a ventilated panel and unique suspension system for a cool, cushioned ride.

3. Step-through Design

Designed for easy mounting by the rider, the recumbent has a step-through design (14 in / 36 cm wide) with a low step-over height (4 in / 10 cm).

4. Seat Adjustment

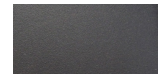
The simple seat adjustment allows the exerciser to change the position of the seat with one hand, either on or off the bike.

5. Ease of Maintenance

The easy-to-remove shroud ensures quick access to the belt-drive system for maintenance and servicing without removing the pedals or crank.

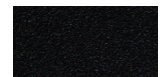
6. Dual-sided Pedals

Allow the exerciser to use the pedals with or without the integrated straps. The extra wide pedals comfortably accommodate feet of all sizes to ensure proper pedaling form.



Storm Grey

Refined colorways with dark Tungsten covers and two frame color options, Storm Grey and Black Pearl.



Black Pearl

Specifications

Dimensions (L x W x H): 67 x 23 x 54 in / 170 x 58 x 136 cm

Equipment Weight: 219 lb / 99 kg

Power: 120 volt, 15 amp circuit

Total Workouts: 17

Resistance Levels: 25

Minimum Watts: 18 (level 1 at 20 RPM)

Maximum Watts: 750 (level 25 at 150 RPM)

Language: English, Danish, Dutch, French, Finnish, German, Italian, Japanese, Korean, Norwegian, Polish, Portuguese, Russian, Simplified Chinese, Spanish, Swedish, Traditional Chinese, Turkish

Network Capabilities: Preva® network capable

Entertainment: 10 in / 25.4 cm LCD Capacitive Touch Screen
Mobile Device Charger and Audio Jack

Accessories: Integrated Reading Rack
Optional - Cable Management

Warranty: Visit www.precor.com for warranty terms.

RBK 835

Experience™ Series

Recumbent Bike

Product Highlights

The RBK 835 Recumbent Bike features a step-through design to appeal to a wide range of exercisers. The simple seat adjustment allows the exerciser to change the position of the seat with one hand, either on or off the bike. A ventilated air flex seat provides exceptional comfort.

Product Features

1. P31 Console

Finally, an LED console that works harder for you, your servicers, and your exercisers. Get integrated asset management to supercharge your service techs with extra information, right at their fingertips. Exercisers will enjoy the well-placed channel or volume change controls. The black color on the P31 looks great across the full range of Precor cardio equipment.

2. Step-through Design

Designed for easy entry, the recumbent bike has a step-through design (14 in / 36 cm wide) with a low step-over height (4 in / 10 cm).

3. Air Flex Seat Back

The custom-designed air flex seat features a ventilated panel and unique suspension system for a cool, cushioned ride.

4. Seat Adjustment

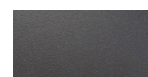
The simple seat adjustment allows the exerciser to change the position of the seat with one hand, either on or off the bike.

5. Ease of Maintenance

The easy-to-remove shroud ensures quick access to the belt-drive system for maintenance and servicing without removing the pedals or crank.

6. Dual-sided Pedals

The dual-sided pedals allow the exerciser to use the pedals with or without the integrated straps. The extra wide pedals comfortably accommodate feet of all sizes to encourage proper pedaling form.



Storm Grey

Refined colorways with dark Tungsten covers and two frame color options, Storm Grey and Black Pearl.



Black Pearl

Specifications

Dimensions (L x W x H): 67 x 23 x 54 in / 170 x 58 x 136 cm

Equipment Weight: 210 lb / 95 kg

Power: Self-powered

Total Workouts: 12

Resistance Levels: 25

Minimum Watts: 18 (level 1 at 20 RPM)

Maximum Watts: 750 (level 25 at 150 RPM)

Language: English, French, German, Italian, Japanese, Portuguese, Russian, Spanish

Network Capabilities: C-SAFE enabled
Mobile Device Charger - Standard

Entertainment: Optional - 15 in / 38.1 cm Personal Viewing System (PVS)

Accessories: Integrated Reading Rack
Optional - Cable Management

Warranty: Visit www.precor.com for warranty terms.

SCL 835

Experience™ Series

StairClimber

Product Highlights

The Precor SCL® 835 far exceeds the status quo and invites you to step up to an experience that will delight. Made from durable, high-performance parts and tested beyond industry standards, the StairClimber is built for reliability. The thoughtful design prevents sweat, dirt, and fluid ingress to deliver an ultra-smooth operation and effective cleaning in a single pass. It invites exercisers to step on and off with ease, exercise with confidence, and stay motivated with engaging content.

Product Features

Dynamic Step Control

The Dynamic Step Control™ system, with an industry-leading tolerance of +/- 0.5 steps per minute, ensures an accurate, consistent step rate, whether slow or fast, for exercisers of all sizes.

Low Maintenance Step Chain

To decrease downtime, service panels can be removed in under one minute to easily access internal components. Constructed of high-strength steel, the 428 O-ring motorcycle step chain requires no planned maintenance – simply inspect annually. Clean and lubricate only if needed.

Tested Beyond Industry Standards

The StairClimber has exceeded industry standards, withstanding over 30 different tests, conducted over 10,000 hours in the lab and field for reliability that operators can trust.

Motivating Workouts

Geographically-inspired milestone workouts entice exercisers to climb 30 well-known landmarks like the Empire State Building, or the Great Pyramid. Customizable and pre-programmed HIIT workouts designed specifically for the StairClimber offer additional motivation.

Specifications

Dimensions (L x W x H): 59 x 31.7 x 84 in / 150 x 81 x 213 cm

Equipment Weight: 375 lb / 170 kg

Power: 120 volt, 15 amp circuit

Recommended Ceiling Height: 9 ft 9 in / 3 m

Step Height: 8 in / 20 cm

Step Dimensions (D x W): 11 in x 20.8 in / 28 cm x 53 cm

Step Rate Range: 20 to 165 steps / minute (SPM)

Total Workouts: 10

Fit Tests: WFI and CPAT

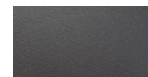
Language: English, French, German, Hebrew, Italian, Japanese, Portuguese, Russian, Spanish

Asset Management: Optional with Preva®Sync™ Module

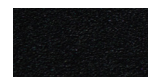
Entertainment: Optional - 15 in / 38.1 cm Personal Viewing System (PVS)

Accessories: Integrated Reading Rack, Mobile Device Charger
Optional - Cable Management

Warranty: Visit www.precor.com for warranty terms.



Storm Grey



Black Pearl

Refined colorways with dark Tungsten covers and two frame color options, Storm Grey and Black Pearl.