




RelaxSpace Pod Electrical & Room Requirements – 60Hz, North America

****IMPORTANT**** Please confirm if your space meets the following guidelines when placing your order so we can plan appropriately for delivery- Room entryway: 33” or larger (narrowest dimension inside doorway, from hinge to to frame) Hallway / space outside of room: 75” or larger

Technical Specifications

MODEL	IMAGE	SPECS	WEIGHT	VOLTAGE	PHASE	Amps
RelaxSpace Wellness Pod		L- 92” W- 32” (36” w/ touchscreen installed) H- 69”	310 lbs.	110 Volts / 60 Hz	Single	3 amps

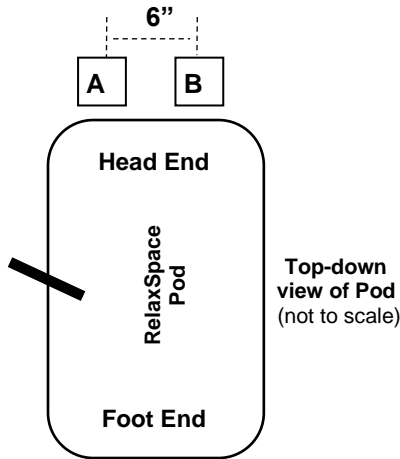
Electrical Requirements ****IMPORTANT: All items are required for EACH unit****

- **A:** Standard 110V, 15A 3 prong duplex outlet. **A** on diagram.
- **B:** CAT-5 or CAT-6 terminated network jack (able to connect to network room). **B** on diagram.
 - *Required for software updates, technical support, and proactive monitoring.

Electrical Wiring Diagrams



Standard, 110V Wall Outlet with CAT-5 or CAT-6 Jack

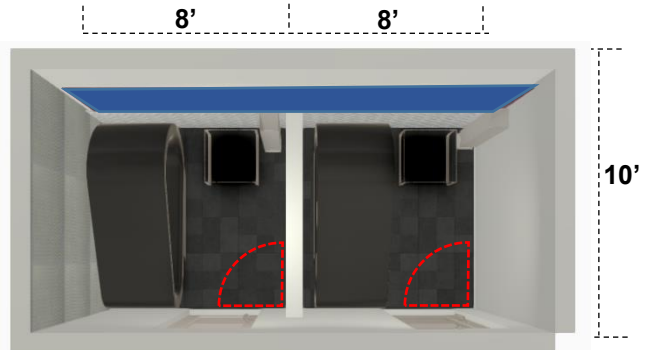
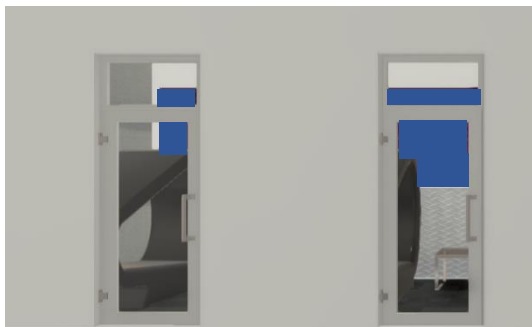


***Small Exhaust Fan** (50 – 80CFM) also recommended in RelaxSpace Pod room to remove scent. Rated less than 1.5 max sones (low noise).

*Unique set of items A & B required **FOR EACH** RelaxSpace Pod. If necessary, location of outlets above may be moved within +/- 5”. Call 1-727-536-5566 for details.

Room Dimensions

Recommended 8’ x 10’ room per RelaxSpace Pod with glass door to allow for both privacy and visibility (*minimum room size is 6’6” x 8’). Check ADA guidelines for compliance.





Options for RelaxSpace Wellness Pod Delivery

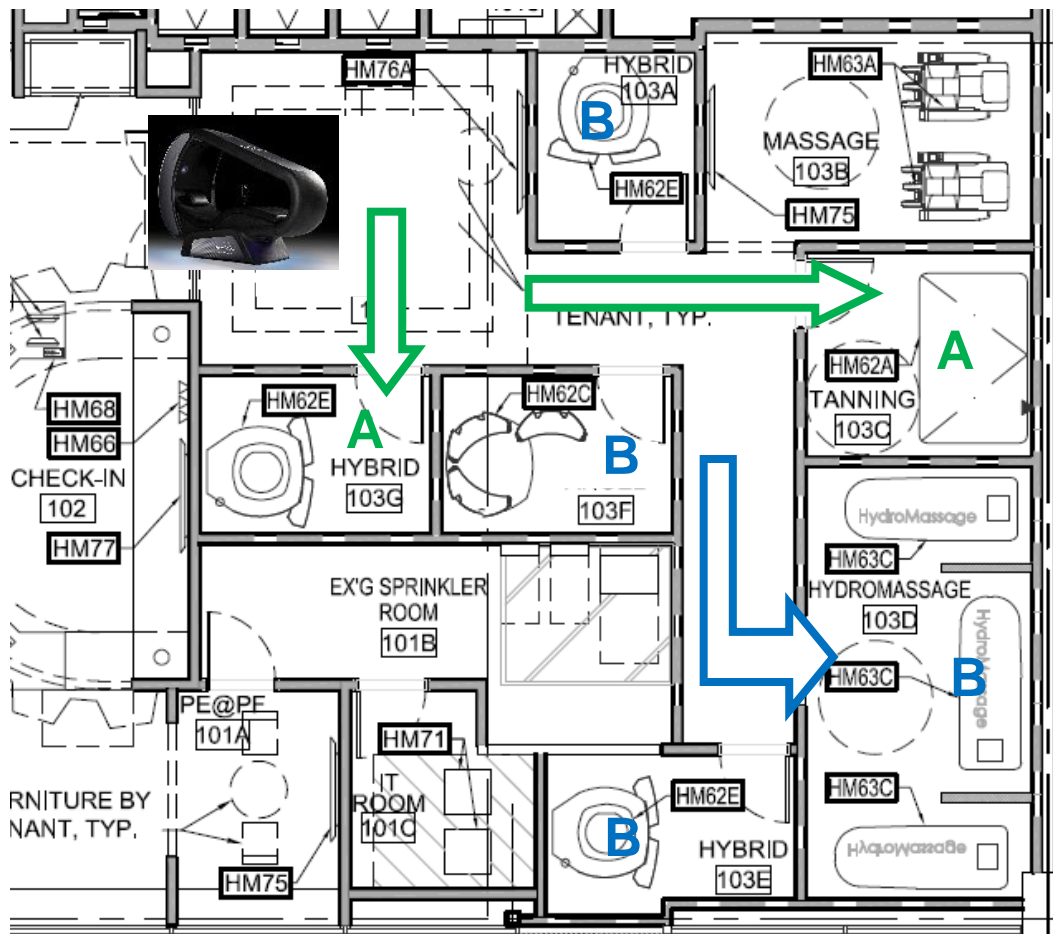
****IMPORTANT:** Your RelaxSpace delivery is easily accommodated regardless of the room / hallway dimensions. Please specify which option fits your space

Option A: One-Person Delivery

- Room Entryway: If your doorway is 33" W or larger (narrowest dimension inside doorway)
- Hallway / Area Outside of Room: If your hallways are 75" W or larger
- No Tight Turns or Narrow Hallways (straight path into room)

Option B: Two-Person Delivery

- If your layout includes hallways or room entryways which are narrower than shown in Option A, delivery is easily accommodated with additional manpower.



Please notify Sales Support regarding which option is required for your order.