

# SCL® 885

## Experience™ Series

# STAIRCLIMBER III

### Product Highlights

The Precor SCL 885 far exceeds the status quo and invites you to step up to an experience that will delight. Made from durable, high-performance parts and tested beyond industry standards, the StairClimber is built for reliability. The thoughtful design prevents sweat, dirt, and fluid ingress to deliver an ultra-smooth operation and effective cleaning in a single pass. It invites exercisers to step on and off with ease, exercise with confidence, and stay motivated with engaging content.

### Product Features

#### P84 Touchscreen Console

The P84 console offers a brilliant 16-inch touchscreen that provides the best blend of performance, fitness, and entertainment that your exercisers expect. It's designed to deliver a best-in-class content suite with engaging workouts, wireless casting with access to thousands of third-party workout and media apps, and integrated Pluto TV, so exercisers always have the content they want, right at their fingertips. Geographically-inspired milestone workouts entice exercisers to climb 30 well-known global landmarks like the Empire State Building in New York City or the Great Pyramid of Giza.

#### Low Maintenance Step Chain

To decrease downtime, service panels can be removed in under one minute to easily access internal components. Constructed of high-strength steel, the 428 O-ring motorcycle step chain requires no planned maintenance – simply inspect annually. Clean and lubricate only if needed.

#### Tested Beyond Industry Standards

The StairClimber has exceeded industry standards, withstanding over 30 different tests, conducted over 10,000 hours in the lab and field for reliability that operators can trust.

#### Dynamic Step Control

The Dynamic Step Control™ system, with an industry-leading tolerance of +/- 0.5 steps per minute, ensures an accurate, consistent step rate, whether slow or fast, for exercisers of all sizes.

### Specifications

**Dimensions (L x W x H):** 59 x 31.7 x 84 in / 150 x 81 x 213 cm

**Equipment Weight:** 375 lb / 170 kg

**Power:** 120 volt, 15 amp circuit

**Recommended Ceiling Height:** 9 ft 9 in / 3 m

**Step Height:** 8 in / 20 cm

**Step Dimensions (D x W):** 11 in x 20.8 in / 28 cm x 53 cm

**Step Rate Range:** 20 to 165 steps / minute (SPM)

**Total Workouts:** 10

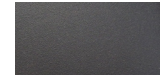
**Fit Tests:** WFI and CPAT

**Language:** English, Danish, Dutch, French, Finnish, German, Italian, Japanese, Korean, Norwegian, Polish, Portuguese, Russian, Simplified Chinese, Spanish, Swedish, Traditional Chinese, Turkish

**Console Features:** 16 in / 40.6 cm LCD Capacitive Touch Screen with wireless charging, audio jack and Bluetooth® headphones

**Accessories:** Integrated Reading Rack  
Optional - Cable Management

**Warranty:** Visit [www.precor.com](http://www.precor.com) for warranty terms.



Storm Grey



Black Pearl

Refined colorways with dark Tungsten covers and two frame color options, Storm Grey and Black Pearl.